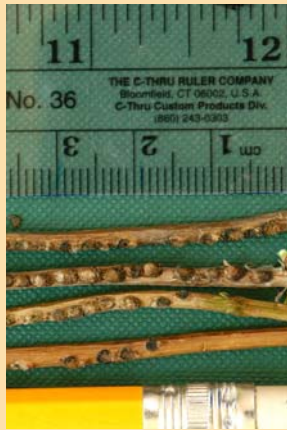


Wanted: Viburnum Leaf Beetle!



Egg Sites
August-April



Larvae Hatch
Late April-May



2nd, 3rd Instars
May-June



Adults
July-October

Violation: Repeated defoliation and devastation of native and ornamental viburnums.

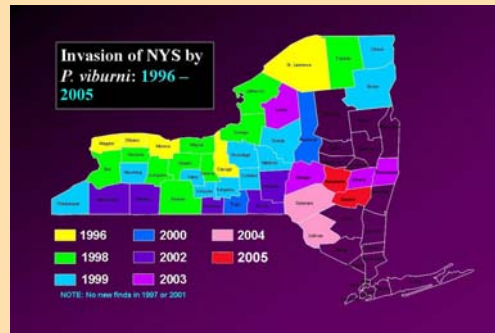
Victims include: Susceptible species of viburnum, especially:

- Arrowwood (*V. dentatum*)
- European cranberrybush (*V. opulus*)
- American cranberrybush (*V. opulus* var. *americana*, formerly *V. trilobum*)

Caution: Small but deadly. Egg sites and young larva are about the size of a pinhead. Older larva and adult beetles are about the size of a match head. Damaged leaves tip off their presence. Repeated defoliation by this vicious predator kills viburnums.

Warrant No.: 96-VLB, Unwanted entry into US territory from Canada. Issued in 1996 on the New York shores of Lake Ontario for this exotic pest from Europe.

Last seen: Spreading rapidly through 41 counties in New York, and most of Maine, Vermont, New Hampshire and northern Pennsylvania. And it has been spotted in Massachusetts, Connecticut, the northeast tip of Ohio as well as Washington State.



Is this innocent viburnum next?

If spotted: Don't panic. Take action to defend our country's viburnums. Join with other Citizen Scientists and report sightings to the Viburnum Leaf Beetle Citizen Science Project. Visit the VLB website for more pictures, management information, and online reporting forms for submitting your local observations.



All information will be shared with Cornell's entomologists and other concerned citizens.

www.hort.cornell.edu/VLB

Photos by Paul Weston, Kent Loeffler, Charlie Mazza and Craig Cramer.