



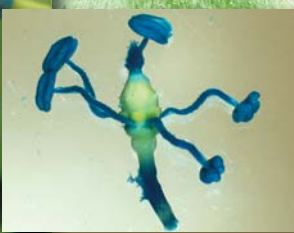
10TH INTERNATIONAL CONFERENCE ON GRAPEVINE BREEDING AND GENETICS

1-5 AUGUST 2010
Geneva, New York, USA



ISHS

SECOND ANNOUNCEMENT www.grapebreeding2010.com



A SYMPOSIUM OF

The International Society for Horticultural Science (ISHS)
The ISHS Vine and Berry Fruits Section
and the
ISHS Grape Vine Genetics and Breeding Working Group

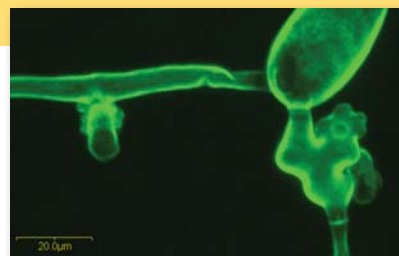




10TH INTERNATIONAL CONFERENCE ON GRAPEVINE BREEDING AND GENETICS

1-5 AUGUST 2010
Geneva, New York, USA

SECOND ANNOUNCEMENT



www.grapebreeding2010.com



A SYMPOSIUM OF
The International Society for Horticultural Science (ISHS)
The ISHS Vine and Berry Fruits Section
and the
ISHS Grape Vine Genetics and Breeding Working Group



Cornell University
College of Agriculture and Life Sciences
New York State Agricultural Experiment Station



USDA-Agricultural Research Service



University of Guelph



2 INTERNATIONAL SOCIETY FOR HORTICULTURAL SCIENCE

ORGANIZING COMMITTEE

Bruce Reisch Cornell Univ.,
Convener
Angela Baldo USDA-ARS¹
Lance Cadle-Davidson USDA-ARS
Peter Cousins USDA-ARS
Helen Fisher Univ. of Guelph, Canada
Amanda Garris USDA-ARS
Nancy Long Cornell Univ.
Annette Nassuth Univ. of Guelph, Canada
Gemma Osborne Cornell Univ.
Chris Owens USDA-ARS
Heidi Schwaninger USDA-ARS
Charles Simon USDA-ARS
Gan-Yuan Zhong USDA-ARS

¹ United States Department of Agriculture –
Agricultural Research Service

SCIENTIFIC COMMITTEE

Anne-Françoise Adam-Blondon France
Luigi Bavaresco Italy
Phyllis Burger South Africa
Peter Clingeleffer Australia
Serge Delrot France
Gabriele Di Gaspero Italy
Rudolf Eibach Germany
Anne Fennell USA
Nami Goto-Yamamoto Japan
Patricio Hinrichsen Chile
Jiang Lu USA
Daeil Kim Republic of Korea
Pal Kozma Hungary
Steve Lund Canada
José Miguel Martínez-Zapater Spain
Jean-Marc Neuhaus Switzerland
Ivan Pejic Croatia
Avi Perl Israel
Enrico Peterlunger Italy
Patricia Ritschel Brazil
Ernst Rühl Germany
Piyada Thipyapong Thailand
Patrice This France
Reinhard Töpfer Germany
M. Andrew Walker USA



ADDRESS FOR CONFERENCE COMMUNICATIONS

Secretary / Treasurer Nancy Long
NYS Agricultural Experiment Station
630 W. North St
Geneva, NY 14456
Phone 315-787-2288
Fax 315-787-2443
E-Mail NPL1@cornell.edu

Convener Bruce Reisch
Dept. of Horticultural Sciences
NYS Agricultural Experiment Station
630 W. North St.
Geneva, NY 14456
Phone 315-787-2239
Fax 315-787-2216
E-mail BIR1@cornell.edu

INVITATION

Every four years, the grape breeding and genetics research community gathers to share the latest advances from around the world. For just the second time since this series began in Germany in 1973, we will meet in North America. On behalf of the Organizing Committee, I invite you to attend the 10th International Conference on Grapevine Breeding and Genetics, in Geneva, New York, 1 – 5 August 2010.



The New York State Agricultural Experiment Station, a division of Cornell University, was established in 1882. Grape breeding and genetics studies began six years later and have been continuous since then. Today, the faculty conducts research in viticulture, pathology, entomology, and enology. Our campus is also home to the United States Dept. of Agriculture Grape Genetics Research Unit and the cold-hardy grapevine germplasm collection. Our activities take place in the midst of a rapidly expanding grape industry that takes advantage of the outstanding genetic diversity in the genus *Vitis*.

We invite you to attend this conference here in the scenic Finger Lakes region of New York, meet with colleagues from around the world, and enjoy this stunning rural wine district a short distance from Canada and New York City.

Bruce Reisch, *Convener, on behalf of the Organizing Committee*



SYMPOSIUM LOCATION

The symposium will be held in Geneva, New York, USA, location of Cornell University's New York State Agricultural Experiment Station. Geneva is a small and diverse city of 14,000 people located in the Finger Lakes Region <<http://www.visitfingerlakes.com>>, about 300 miles (480 km) from New York City and just 120 miles (190 km) from the world-famous Niagara Falls <<http://www.infoniagara.com/>>.

Along the shores of Lake Ontario north of Geneva is the main apple, pear, peach and cherry production region of New York. Lake Ontario is the easternmost of the chain of Great Lakes in North America. Geneva is situated at the northern tip of Seneca Lake, and many vineyards along with nearly 100 wineries can be found surrounding this lake as well as the other Finger Lakes nearby <<http://www.newyorkwines.org/winecountry/fingerlakes.ashx>>.

Our meeting will take place at the Scandling Campus Center <<http://www.hws.edu/alumni/campaign/scandling.aspx>> of Hobart and William Smith Colleges, a private college located in Geneva.

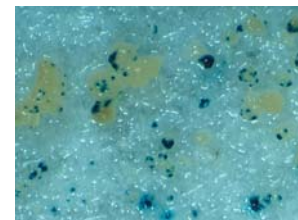
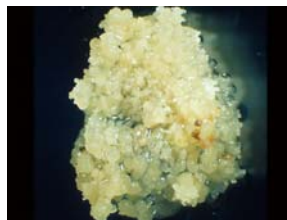
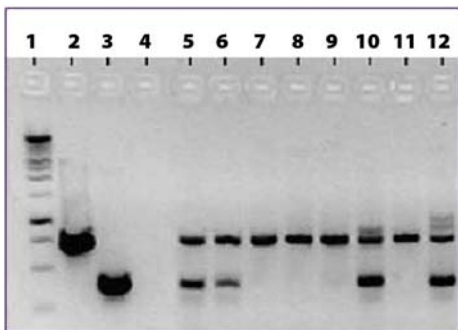


SCIENTIFIC PROGRAM

This conference will provide a forum for discussion of scientific advances related to grapevine genetics and improvement. Presentations related to this subject are welcome and will be grouped according to the following categories:

- Grapevine germplasm (taxonomy, population genetics, parentage, fingerprinting)
- Breeding techniques, goals, and strategies
- Pest and disease resistance (breeding, genetics, mapping)
- Berry quality (breeding, genetics, mapping)
- Adaptation to soils and climates (breeding, genetics, mapping)
- Genomics, transcriptomics, proteomics, and metabolomics
- Transgenic research

Invited speakers will provide overviews of the state of the art in several topic areas.



CALL FOR ABSTRACTS

Participants interested in presenting either an oral paper or a poster are invited to submit an abstract. The Scientific Committee will review submitted abstracts to determine those best suited for oral presentation. All authors are expected to submit a complete manuscript for publication in a forthcoming edition of *Acta Horticulturae*. Each manuscript will be peer reviewed prior to publication. All participants (except single day registrants) will receive a copy of the conference proceeding (*Acta Horticulturae*) when published.

The abstract submission deadline is 9 April 2010. Acceptance / rejection of abstracts, and form of presentation (oral vs. poster) will be communicated to authors by 7 May 2010. Abstracts must be submitted via the internet at: <http://publish.actahort.org/ishs/>. Click on the link to this conference, and then follow the instructions to register with the DSpace system. Once registered, you can submit your abstract. Abstract submission help is available on the above site in the form of pdf documents and a quicktime movie. The presenting author must register for the conference by the early registration deadline. Failure to register will result in removal of the abstract from the program. The paper should not have been previously published and must be scientifically sound. Abstracts should normally be no longer than 350 words.

Instructions to Authors

Oral Presentations: Each oral presentation will be given 15 minutes (including 2 minutes for questions). Computer projection will be available. Presentations must be prepared in Microsoft PowerPoint and saved to either a CD or flash drive. Please contact the audio visual desk on arrival and transfer your presentation to the symposium computer and review to resolve any incompatibility issues.

Poster Presentations: The size of posters must be less than 100 cm width X 150 cm height. Posters must be displayed from Monday 2 August, 8:30 AM through Thursday 5 August, 10:00 AM. Posters can be mailed to the conference secretary but must be received by Friday 30 July.

Manuscripts: All oral and poster presenters are expected to submit a manuscript (8 page maximum length including tables and figures). Invited speakers must also submit a manuscript with a maximum length of 16 pages. Please carefully follow the *Acta Horticulturae* manuscript preparation guidelines, which can be found here: <http://www.ishs.org/wri/pap1.htm>. Manuscripts must be submitted using the ISHS abstract and manuscript submission web site.

The deadline for receipt of manuscripts is 3 September 2010.

CALENDAR

The 2nd Annual Meeting of the Grape Research Coordination Network takes place 30 July – 1 August 2010 on the campus of Hobart and William Smith Colleges. See information on page 7.

Sunday, 1 August 2010

3:00 pm-8:00 PM:

Registration

6:00 PM-9:00 PM:

Opening Ceremony and Reception, The Smith Opera House, Seneca Street, Geneva <<http://thesmith.org>>

Monday, 2 August 2010

Morning:

Research presentations, Scandling Campus Center, Hobart and William Smith Colleges

Afternoon:

Research presentations and Poster Session 1

Tuesday, 3 August 2010

Morning:

Research presentations

Afternoon:

Field Tour

New York State Agricultural Experiment Station
United States Department of Agriculture Grape Germplasm Repository
United States Department of Agriculture Grape Genetics Research Unit
Barbecue Dinner

Wednesday, 4 August 2010

Morning:

Research presentations

Afternoon:

Poster Session 2

4:00 PM:

Depart for Official Conference Banquet with winery stop en route

6:00 PM:

Banquet at Watkins Glen Harbor Hotel
<<http://www.watkinsglenharborhotel.com/>>

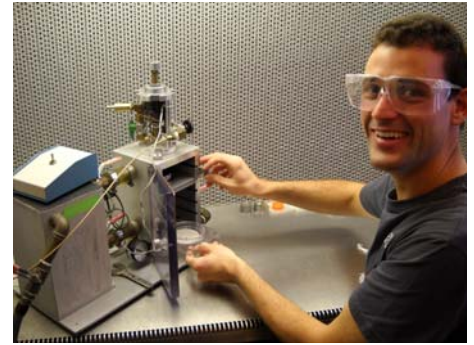
Thursday, 5 August 2010

Morning:

Research presentations

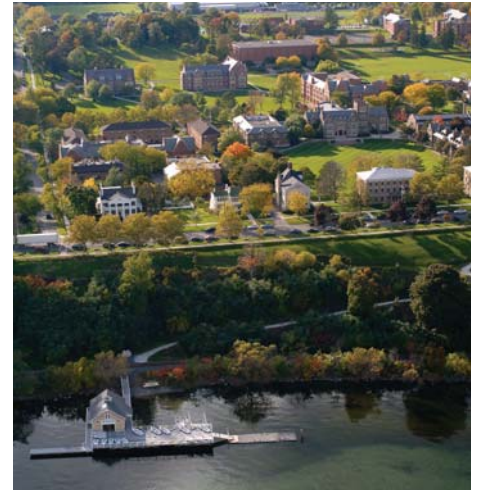
Afternoon:

Conference concludes and post-conference tour departs



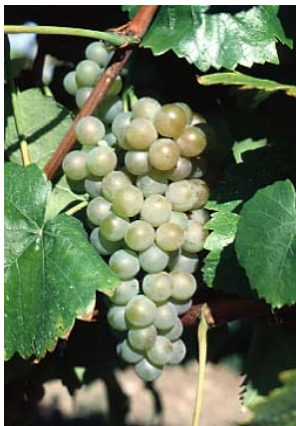
2ND ANNUAL MEETING OF THE GRAPEVINE RESEARCH COORDINATION NETWORK

In coordination with and immediately preceding the 10th International Conference on Grapevine Breeding and Genetics, the **2nd Annual Meeting of the Grapevine Research Coordination Network (GRCN)** will be held on the Hobart and William Smith campus in Geneva, NY, 30 July – 1 August, 2010. Supported by the U.S. National Science Foundation, the GRCN aims to coordinate grape functional genomic research among U.S. grape researchers and to articulate and coordinate U.S. research with international initiatives. The 2010 GRCN meeting will focus on applied functional genomics research, particularly as it relates to grape breeding and genetics. The format will encourage in-depth discussions and outcomes. Registration details will be posted in January 2010 at <http://www.vitaceae.org/index.php/Meetings/GrapeResearchCoordinationNetworkConference2>.



POST-CONFERENCE TOUR: FINGER LAKES WINE DISTRICT AND NIAGARA FALLS

breeders and geneticists will be especially interested in seeing the growing wine industry of the Finger Lakes, which is based upon the use of cultivars originating from both European and American species. Award-winning wines are being made from classic grapes such as White Riesling, and high quality interspecific hybrid cultivars such as Traminette have also garnered awards and accolades. In addition, the native cultivars descending from *Vitis labrusca* are being used in a variety of wines. The post-symposium tour will begin directly after lunch on Thursday, 5 August, and conclude at mid-day Saturday, 7 August. The diversity of grapevine cultivars grown in the Finger Lakes region will be featured during vineyard and winery visits on Thursday afternoon and Friday morning, and dinner on Thursday will be at an area winery. Dinner on Friday will be in Niagara Falls, with a visit to the Falls (on the New York side) and a “Maid of the Mist” <http://www.maidofthemist.com> boat ride to the base of the famous Horseshoe Falls on Saturday morning. Accommodations on Thursday evening will be in the air-conditioned student housing on the Hobart and William Smith Colleges campus and at the Days Inn Niagara at the Falls <http://is.gd/4Sak5> on Friday night.



The tour will conclude after lunch on Saturday. Participants can elect to stay at Niagara Falls on their own or continue on to the Canadian side where there are further viticultural as well as sightseeing attractions, such as the multicultural

city of Toronto, Niagara on the Lake, and winery tours. Information on tourism possibilities in Canada will be available at the conference. *Please make sure you have the appropriate visa* for entering Canada and returning to the United States, if necessary, before crossing the border.

Tour participants can be dropped off at the airports in Buffalo, New York, or Rochester, New York, during the afternoon return of the tour bus to Geneva. If overnight accommodations are needed near either airport, please contact the conference secretary.

The cost of the post-conference tour is \$300/per person double occupancy and \$375 per person single occupancy. This includes two nights lodging, dinner on Thursday, 5 August; three meals on Friday, 6 August; and two meals (B, L) on Saturday, 6 August, plus the boat ride on the “Maid of the Mist”.



ACCOMPANYING PERSONS PROGRAM

Accompanying persons are invited to join symposium participants for the welcome reception (Sunday 1 August), the Experiment Station tour plus barbecue dinner (Tuesday 3 August), and the banquet (Wednesday 4 August). Information on tourism possibilities will be available at the registration desk. In addition, the following optional tours are available.

August 2--Monday

Six hour winery tour---3 wineries with wine tasting, lunch, and visit to a Mennonite farm store (\$95)

August 3, Tuesday

Seven hour tour to Corning Museum of Glass <<http://www.cmog.org/>>, including museum admission, shopping, and a waterfalls tour. Lunch will be on your own. (\$85)

August 4, Wednesday

Six hour tour to the George Eastman House and International Museum of Photography <<http://www.eastmanhouse.org/>>, Rochester, New York, including tour of the city of Geneva, museum admission, and escort with commentary. Lunch will be on your own. (\$80)



TOURIST INFORMATION

<http://www.fingerlakes.org/>

or call (800) 548-4386

<http://www.genevany.com>

<http://www.visitfingerlakes.com>

FINGER LAKES WINERIES

<http://www.newyorkwines.org/>

WineCountry/FingerLakes.ashx



GENERAL INFORMATION

Location:

Scandling Campus Center
Hobart and William Smith Colleges
Geneva, New York 14456 USA
<http://www.hws.edu>

Language:

The conference will be conducted in English without translation services.

Travel to Geneva, New York:

By car – Geneva is located 5 miles south of Interstate 90, the NYS Thruway, Exit 42.

By air – Geneva is located about 60 minutes by car or taxi from airports in Rochester (ROC), Syracuse (SYR) and Ithaca (ITH), New York. Automobile rentals are available at all three airports. There is also passenger rail service to Rochester and Syracuse. Taxi and shuttle services to Geneva are costly. The conference will provide transportation from ROC to Geneva on Sunday August 1 for arrivals between 11:00 AM and 9:00 PM and return service to ROC on Thursday August 4. You MUST communicate your flight information to the conference secretary so arrangements can be made for transportation.

By train – Amtrak services both Rochester and Syracuse, New York, but taxi service to Geneva can be very expensive.

By bus – Geneva is serviced by Greyhound and Trailways bus lines.

Letter of Invitation:

Individuals requiring an official letter of invitation in order to attend the symposium may request it from the conference secretary. This letter is to assist participants who need to obtain a visa or permission to attend the symposium and does not imply exemption from registration fees or other expenses, nor does it imply any financial or other support from the symposium.

Passports and Visas:

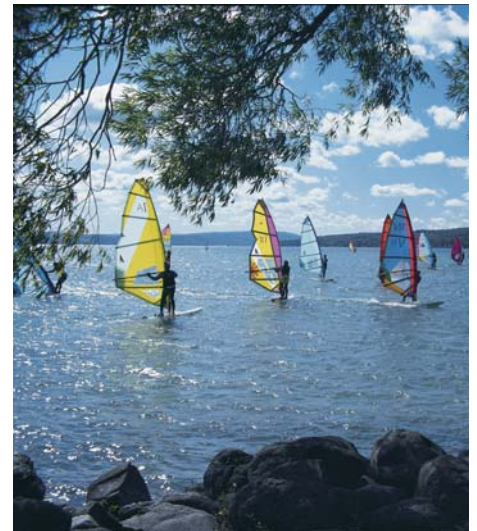
A valid passport is required of all individuals entering from outside the United States. In addition, a visa is required for individuals from many countries. For specific country requirements, please check with the local U.S. embassy or consulate or check the official U.S. government website <http://travel.state.gov/visa/visa_1750.html>.

Climate:

August in Geneva is usually warm, humid, and variable. Daytime temperatures range from 23-36 C (75-95 F) and nighttime temperatures range from 15-28 C (60-80 F). Rain is common.

Registration Fees:

Registration fees will include transportation to and from the Greater Rochester International Airport; opening ceremony and reception on 1 August; lunches and dinners 2, 3, and 4 August, and lunch on 5 August; banquet on Wednesday 4 August; coffee breaks; book of abstracts; professional tour; and the conference proceedings to be published as an edition of *Acta Horticulturae*. Single day registrants will not receive the conference proceedings but can purchase it separately directly from ISHS.



ACCOMMODATIONS:

Participants will have the option to stay in the air-conditioned dormitories on the Hobart and William Smith College campus, or at one of three nearby hotels: Ramada Inn – Geneva Lakefront, Hampton Inn, and Microtel. Daily transportation (before and after sessions) between these hotels and the Scandling Campus Center will be available at no charge to participants.

Accommodation	Rate per night	Reservation information
Hobart and William Smith Colleges (HWS) Includes full hot breakfast at College cafeteria; rooms in modern student housing are either single or double and are air-conditioned with a shared bathroom. Towels, sheets, pillows, blankets included but not maid service.	\$35 USD per person per night (including any applicable tax)	Complete reservation using the online conference registration site.
Ramada Inn Geneva Lakefront , does not include breakfast. (1 km from conference venue)	Sun - Thurs. \$75 single occupancy, \$85 double occupancy + applicable taxes Fri. - Sat. - \$130 single occupancy, \$140 double occupancy + applicable taxes	Call hotel. A block of rooms has been reserved. Please mention Grape Breeding 2010 for the special rate. Deadline for special rate is June 30, 2010. Phone: 315-789-0400
Hampton Inn Geneva Includes continental breakfast. (1.2 km from conference venue)	Sun - Thurs. \$85 + applicable taxes	Call hotel. A block of rooms has been reserved. Please mention Grape Breeding 2010 for the special rate. Deadline for special rate is June 30, 2010. Phone: 315-781-2035
Microtel Geneva Newest hotel in Geneva. Scheduled to open January 2010.	A block of rooms has been reserved at a special rate of \$62.10.	Call hotel. Please mention Grape Breeding 2010 when making your reservation. Deadline for special rate is June 30, 2010. Phone: 315-789-7890



Hobart and William Smith Colleges Campus Map

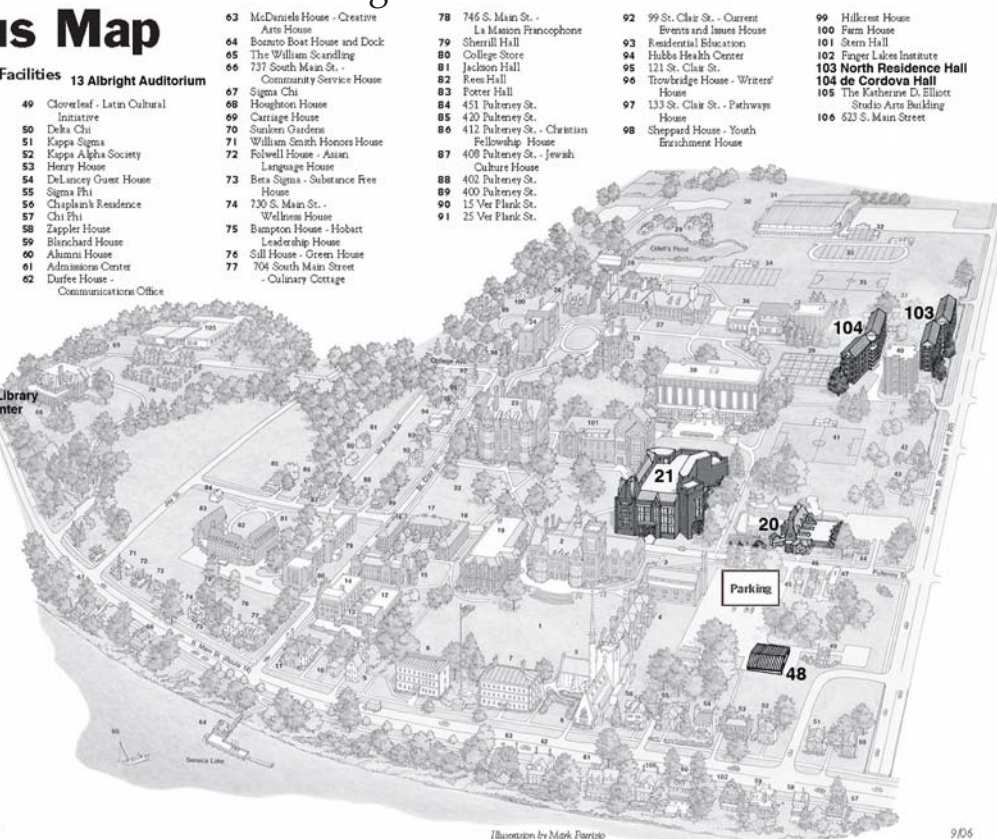
Numerical Listing of Facilities

- 1 Hobart Quadrangle
- 2 Core Hall
- 3 Williams Hall
- 4 Madbery Hall
- 5 Demarest Hall
- 6 St. John's Chapel / St. Mark's Tower
- 7 Geneva Hall
- 8 The Salisbury Center at Trinity Hall
- 9 Merritt Hall
- 10 Hens House
- 11 President's House
- 12 Eaton Hall
- 13 Albright Auditorium
- 14 Learning Hall
- 15 Rosenberg Hall / Napier Classroom Center
- 16 Durfee Hall
- 17 Bartlett Hall
- 18 Hale Hall
- 19 Oulick Hall

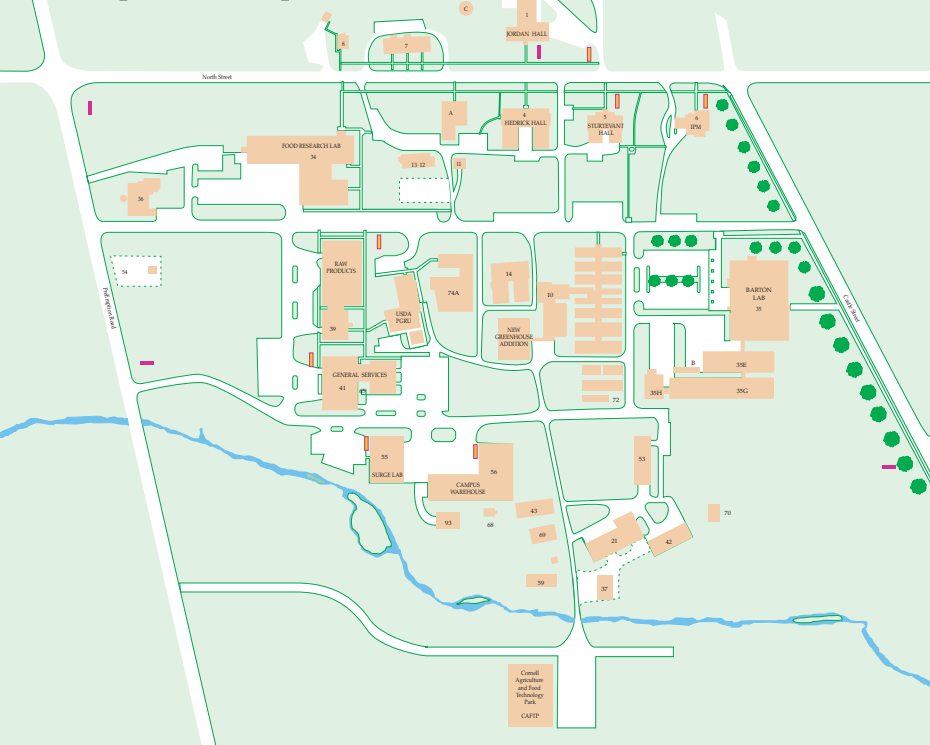
20 Scandling Center 21 Warren Hunting Smith Library and Melly Academic Center

- 22 William Smith Green
- 23 Smash Hall
- 24 Hinshon House
- 25 Blackwell House
- 26 Miller House
- 27 Coonstock House
- 28 Barn
- 29 Village at Odell's Pond
- 30 Stiles Field
- 31 Robert A. Bristol Field House
- 32 William Elliott Varsity House
- 33 Rowell Field Stadium
- 34 McCooy Memorial Field
- 35 William Smith Field
- 36 Wain-Seeley Gymnasium
- 37 McCormick House
- 38 Bristol Gymnasium
- 39 Tennis Courts
- 40 Emerson Hall
- 41 Cotera Memorial Field
- 42 121 Hamilton St.
- 43 WEOS-FM
- 44 Intercultural Center
- 45 295 Pulney St.
- 46 Brent Cooperative - Multi-Cultural Student House
- 47 Academic Support Theme House

48 Security & Safety/Buildings & Grounds



Cornell University New York State Agricultural Experiment Station Campus Map



New York State AGRICULTURAL EXPERIMENT STATION 4/26/07

- 1 Jordan Hall
- 4 Hedrick Hall
- 5 Sturtevant Hall
- 6 Integrated Pest Management
- 7 Triplex House
- 8 666 W. North Street
- 10 Old Greenhouse Range
- 11 Stone Barn
- 12 Sawdust Cafe
- 13 Fruit Storage
- 14 Utility Storage
- 21 Nursery Cellars
- 23 629 Castle Street
- 24 649 Castle Street
- 25 659 Castle Street
- 26 665 Castle Street
- 27 673 Castle Street
- 28 681 Castle Street
- 34 Food Research Lab
- 35 Barton Laboratory
- 35E Entomology Greenhouse
- 35G Plant Pathology Greenhouse
- 35H Spray Lab / Rain Tower
- 36 Heating Plant
- 37 Ent/PP Pole Barn
- 39 Seed Processing
- 40 Raw Products
- 41 General Services
- 42 Pomology Pole Barn
- 43 Mower Storage
- 53 Soils Building
- 54 Power Substation
- 55 Surge Laboratory
- 56 Campus Warehouse
- 59 New Insectary
- 60A Recreation pavillion
- 60B Barbeque
- 60C Storage
- 65 Industrial Chemical Building
- 68 Storage Shed
- 69 USDA Screenhouse
- 70 Pom. & Vit. Screenhouse
- 72 USDA Plastic Greenhouse
- 74 Germplasm Repository
- 74A Plant Introduction Headhouse
- 93 Service Pole Barn
- A Parrot Hall
- B Plant Pathology Temporary Offices
- C Water Tower



CONFERENCE REGISTRATION:

Participants may register online using the online registration form to be found at <<http://www.grapebreeding2010.com>>. Payment must accompany registration. **The early registration deadline is 30 April 2010.** The presenting author associated with a submitted abstract must register for the symposium by the early registration deadline. Failure to register will result in removal of the abstract from the program. Payment for registration may be made by credit card or cheque payable in US funds.

A schedule of registration fees (USD) follows:

Registration Category	Until 30 April 2010	After 30 April 2010
ISHS member ¹	\$600	\$700
ISHS non member ¹	\$690	\$790
Student ISHS member ¹	\$300	\$400
Student ISHS non member ¹	\$350	\$450
Accompanying person ²	\$190	\$240
Single day registration ³	\$225	\$275

Notes:

1. Registration fees for ISHS members and non members as well as students will include transportation to and from the Greater Rochester International Airport at specified times; opening ceremony and reception on 1 August; lunches and dinners 2, 3, and 4 August, and lunch on 5 August; banquet on Wednesday 4 August; coffee breaks; program with book of abstracts; Experiment Station tour on 2 August; and the conference proceedings to be published as an edition of *Acta Horticulturae*. Non members of ISHS will receive a one year membership in ISHS included with their conference registration.
2. Registration fee for accompanying persons includes airport transportation (ROC only), the opening ceremony and reception 1 August, barbecue dinner 3 August, and banquet 4 August.
3. The registration fee for one day includes only the official conference program and book of abstracts, coffee breaks, and lunch. Single day registrants will not receive the conference proceedings but can purchase it separately directly from ISHS.
4. Cancellation policy: Cancellations received by 2 July 2010 will be refunded minus a 20% processing fee. Please note that such refunds will only be processed after the conference. Cancellations received after 2 July 2010 are non-refundable; however, substitute attendees from the same organization are welcome. Cancellations must be sent in writing to the conference secretary by mail, fax, or email. If for any reason the conference is cancelled or interrupted, the conference will not be responsible for refunds of airfares and payment for accommodations. We will reimburse other costs in proportion to the cancelled activities less a fair administrative cost.

