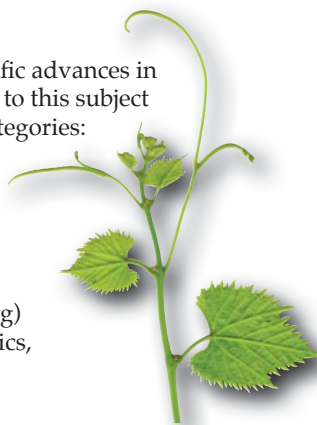


SCIENTIFIC PROGRAM

This conference will provide a forum for discussion of scientific advances in grapevine genetics and improvement. Presentations related to this subject are welcome and will be grouped according to the following categories:

1. Grapevine germplasm (taxonomy, population genetics, parentage, fingerprinting)
2. Breeding techniques, goals, and strategies
3. Pest and disease resistance (breeding, genetics, mapping)
4. Berry quality (breeding, genetics, mapping)
5. Adaptation to soils and climates (breeding, genetics, mapping)
6. Genomics, transcriptomics, proteomics, and metabolomics
7. Transgenic research



Attendees are invited to offer papers, which will be presented either as 15 minute oral presentations (including 3 minutes for questions) or in poster sessions. The International Scientific Committee will choose papers for oral presentations. Invited speakers will provide overviews of the state of the art in several topic areas.

PRELIMINARY CALENDAR

Sunday, 1 August 2010

Opening Ceremony and Reception,
Smith Opera House

Monday, 2 August 2010

Research presentations, Scandling Center,
Hobart and William Smith Colleges
Poster Session 1

Tuesday, 3 August 2010

Research presentations (morning)
Field Tour (afternoon)
NYS Agricultural Experiment Station
USDA Grape Germplasm Repository
USDA Grape Genetics Research Unit
Local grape industry
Barbecue Dinner

Wednesday, 4 August 2010

Research presentations
Poster Session 2

Thursday, 5 August 2010

Research presentations
All-Conference Banquet

A pre- or post-conference tour will be offered, to include the opportunity to visit the regional grape industry, as well as popular tourist sites in the Finger Lakes, New York City, and/or Niagara Falls.

<http://www.grapebreeding2010.com>

ORGANIZING COMMITTEE

Bruce Reisch	Cornell Univ., Convener
Angela Baldo	USDA-ARS ¹
Lance Cadle-Davidson	USDA-ARS
Peter Cousins	USDA-ARS
Helen Fisher	Univ. of Guelph, Canada
Amanda Garris	USDA-ARS
Nancy Long	Cornell Univ.
Annette Nassuth	Univ. of Guelph, Canada
Gemma Osborne	Cornell Univ.
Chris Owens	USDA-ARS
Heidi Schwaninger	USDA-ARS
Charles Simon	USDA-ARS
Gan-Yuan Zhong	USDA-ARS

¹ United States Department of Agriculture –
Agricultural Research Service



Cornell University
College of Agriculture and Life Sciences
New York State Agricultural Experiment Station



UNIVERSITY
of GUELPH



Congress Secretariat

Secretary / Treasurer

Nancy Long
NYS Agricultural Experiment Station
630 W. North St.
Geneva, NY 14456
Phone: 315-787-2288
Fax: 315-787-2443
E-Mail: NPL1@cornell.edu

Convener

Bruce Reisch
Dept. of Horticultural Sciences
NYS Agricultural Experiment Station
630 W. North St.
Geneva, NY 14456
Phone: 315-787-2239
Fax: 315-787-2216
E-mail: BIR1@cornell.edu

If you would like to receive the Second Announcement, please fill out and return the following form.
You may also request the Second Announcement by filling out the form at <www.grapebreeding2010.com>.

Family Name: _____ Given Name: _____

Organization: _____

Address: _____

E-mail: _____

I am interested in participating in a Pre-symposium tour Post-symposium tour

Return this form by July 1, 2009 to:

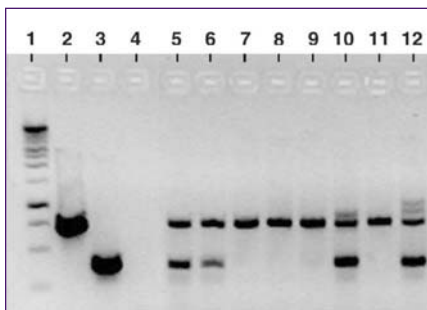
Nancy Long
NYSAES/Cornell University
630 West North Street
Geneva, New York 14456



INVITATION

Every four years, the grape breeding and genetics research community gathers to share the latest advances from around the world. For just the second time since this series began in Germany in 1973, we will meet in North America. On behalf of the Organizing Committee, I invite you to attend the 10th International Conference on Grapevine Breeding and Genetics, in Geneva, New York, 1 – 5 August 2010.

The New York State Agricultural Experiment Station, a division of Cornell University, was established in 1882. Grape breeding and genetics studies began six years later and have been continuous since then. Today, the faculty conducts research in viticulture, pathology, entomology, and enology. Our campus is also home to the United States Dept. of Agriculture grape breeding and genetics program, and the associated cold-hardy grapevine germplasm collection. Our activities take place in the midst of a rapidly expanding grape industry that takes advantage of the tremendous genetic diversity in the genus *Vitis*.



We invite you to attend this conference here in the heart of the scenic Finger Lakes region of New York, meet with colleagues from around the world, and enjoy this stunning rural wine district a short distance from Canada and New York City.

Bruce Reisch, *Convener, on behalf of the Organizing Committee*

GENERAL INFORMATION:

Location:

Scandling Center
Hobart and William Smith Colleges
Geneva, New York 14456 USA
<http://www.hws.edu>

Language:

The symposium will be conducted in English without translation services.



Registration Fees:

Registration fees will include transportation to and from the Greater Rochester International Airport; lunches and dinners (except dinner on Wed. Aug. 4); coffee breaks; book of abstracts; professional tour; and the conference proceedings to be published as an edition of *Acta Horticulturae*.

Accommodations:

Most attendees will find it convenient and inexpensive to stay in the air-conditioned dormitories on the Hobart and William Smith College campus. Rooms will also be available nearby at the Ramada Inn – Geneva Lakefront as well as the Hampton Inn.

Conference registration will be available on the web site <www.grapebreeding2010.com> after August 2009. A tentative schedule of registration fees (USD) follows:

	Until 30 April 2010	After 30 April 2010
ISHS member	\$600	\$700
ISHS non member	\$690	\$790
Student ISHS member	\$300	\$400
Student ISHS non member	\$350	\$450
Accompanying person	\$190	\$240
One day	\$225	\$275

Travel to Geneva, New York:

By car – Geneva is located 5 miles south of Interstate 90, the NYS Thruway, Exit 42.
By air – Geneva is located about 60 minutes by car or taxi from airports in Rochester (ROC), Syracuse (SYR) and Ithaca (ITH), New York. Automobile rentals are available at all three airports. There is passenger rail service to Rochester and Syracuse. Taxi and shuttle services to Geneva are costly. The conference will provide transportation from ROC to Geneva on Sunday August 1 and return service to ROC on Friday August 5.
By bus – Geneva is serviced by Greyhound and Trailways bus lines.

10TH INTERNATIONAL CONFERENCE ON GRAPEVINE BREEDING AND GENETICS

1-5 AUGUST 2010
Geneva, New York, USA



FIRST ANNOUNCEMENT

www.grapebreeding2010.com