



United States Department of Agriculture

2021 Empire State Producers EXPO



New Hampshire

Natural
Resources
Conservation
Service



No-till Sweet Corn and Pumpkins in NH

January 12th, 2021 | Chad Cochran, Resource Conservationist, New Hampshire

Natural
Resources
Conservation
Service

nrcs.usda.gov/



“As to methods there may be a million and then some, but **principles are few**. The man who grasps principles can **successfully select his own methods**.

The man who tries methods, ignoring principles, is sure to have trouble.”

- *Harrington Emerson*



Why We Till



- **Mixes Soil >>** Incorporates manure & fertilizer
- **Warms soil >>** Exposes soil to sunlight
- **Dries soil >>** Exposes soil to sunlight
- **Prepares the seedbed >>** Makes planting easier
- **Releases nitrogen >>** Rapidly decomposes organic matter
- **Terminates cover crops & weeds**
- **We like to drive tractors!**
- **We like “clean” fields**
- **We’ve always done it**
- **We know it works**



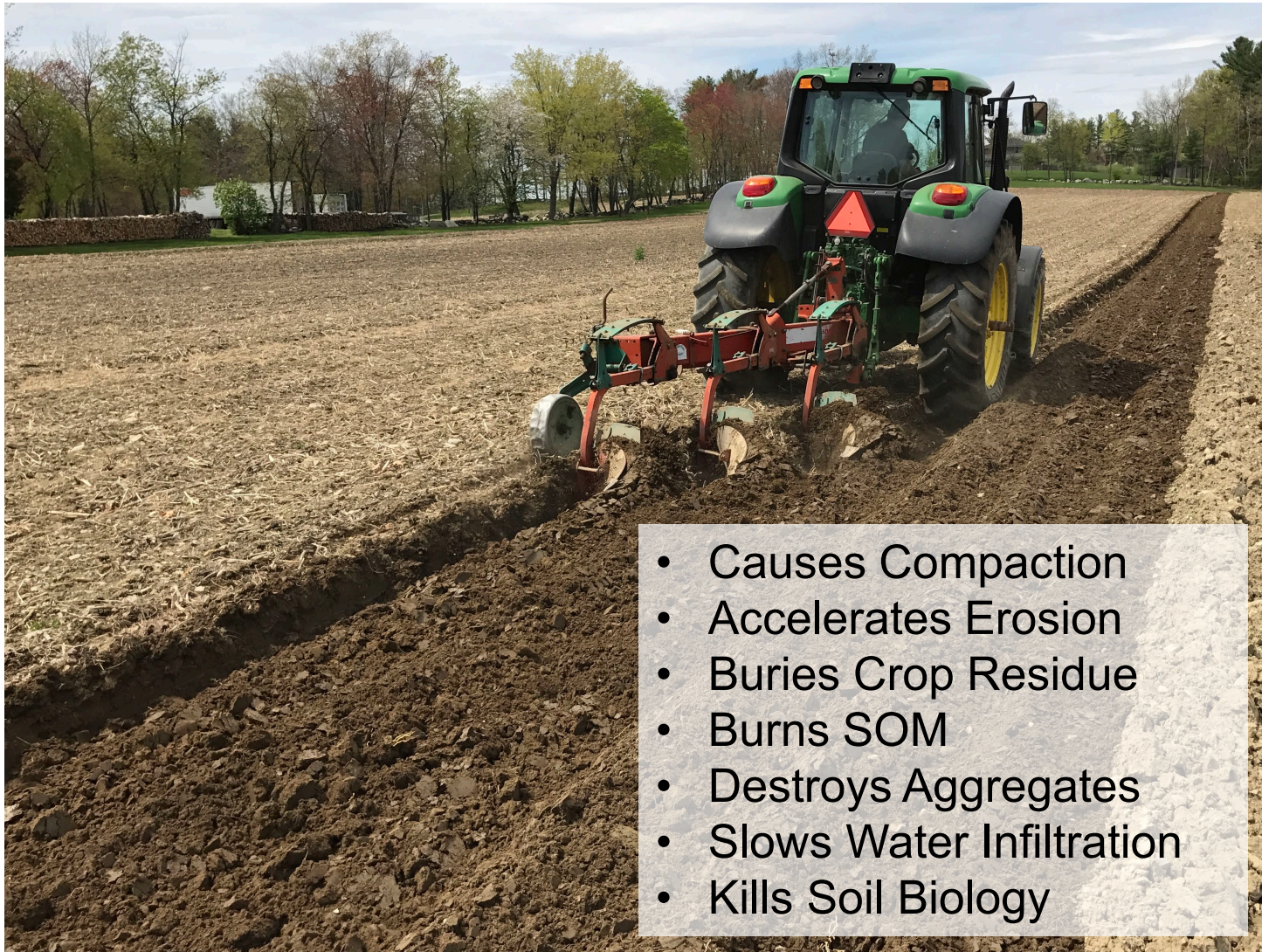
Is it an efficient and sustainable way to farm?



Natural
Resources
Conservation
Service

nrcs.usda.gov/

Why We Shouldn't Till



- Causes Compaction
- Accelerates Erosion
- Buries Crop Residue
- Burns SOM
- Destroys Aggregates
- Slows Water Infiltration
- Kills Soil Biology



Natural
Resources
Conservation
Service

nrcs.usda.gov/



Soil Health Principals

- Forage & Biomass Planting
- Crop Rotation
- Cover Crops

**Maximize
Living
Roots**



**Minimize
Disturbance**



- Reduced Tillage
- Controlled Traffic
- Avoid Tillage When Wet

**Maximize
Biodiversity**



- Livestock
- Cover Crops
- Crop Rotation
- Rotational Grazing

**Maximize
Soil Cover**



- Cover Crops
- Mulching
- Reduced Tillage
- Forage & Biomass Planting



Why No-till?

Protect
Soil Habitat
& Organic
Matter



**Minimize
Disturbance**



**Maximize
Soil Cover**

- Stable aggregates
- Manage erosion
- Buffer temperature
- Reduce evaporation
- Increase infiltration
- Maintain SOM



Why No-till?

Management Scenario		Soil Health Scores		
<i>Primary Tillage</i>	<i>Cover Crops</i>	<i>Soil Erosion (tons/ac./yr.)</i>	<i>Soil Conditioning Index (SCI)</i>	<i>Soil Tillage Intensity Rating (STIR)</i>
Moldboard plow	Winter rye	2.8	-0.061	110
Chisel plow	Winter rye	1.9	0.088	91
Disk	Winter rye	2.2	0.088	84
No-till	Winter rye	0.72	0.53	8.8



Why No-till?



Soil Health

- Long-term improvements to yield
- Yields more consistent year-to-year
- More resilient to bad weather
- Lower inputs

Time

- Single pass planting
- No field prep

Economic

- Less equipment to repair and maintain
- Reduced labor costs
- Saves fuel



Natural
Resources
Conservation
Service

nrcs.usda.gov/



No-till Techniques

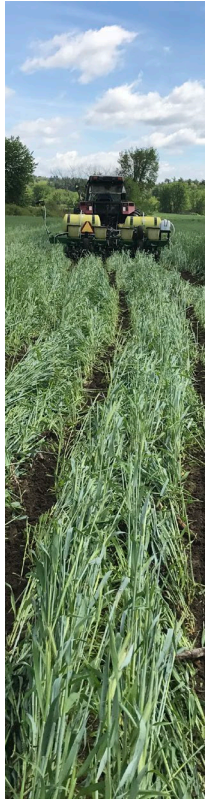


Tillage

- Prepare seedbed and terminate cover crop
- Cover crops can increase tillage!
- Kills cover crop early >> reduced growth/reduced benefit

Traditional No-till

- “Spray & Wait” technique
- Kills cover crop early >> reduced growth/reduced benefit



Natural
Resources
Conservation
Service



nrcs.usda.gov/

No-till Techniques



Timing Challenges

- Must wait for adequate soil temperature
- Use full-till and/or zone-till for earlier planting
- Early no-till vigor will be slow
- May need to overlap plantings for weekly harvest windows

Natural
Resources
Conservation
Service



6/5/2019

nrcs.usda.gov/

No-till Techniques



Natural
Resources
Conservation
Service

nrcs.usda.gov/



6/20/2019

No-till Techniques



Natural
Resources
Conservation
Service



7/2/2019

nrcs.usda.gov/

No-till Techniques



Natural
Resources
Conservation
Service



7/12/2019

nrcs.usda.gov/

No-till Retrofits



Program

- Provide on-farm advice for converting corn planters to no-till
 - Jeff Sanders, UVM Extension & Private Consultant & Farmer
- Help choosing the right approach and equipment to purchase
- Get answers to questions about no-till
- Farmers purchase approved equipment and install
 - 75/25 Cost-share for equipment cost
- In-field advice on planter set-up and operation



Natural
Resources
Conservation
Service

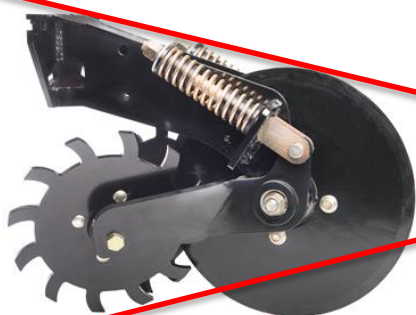
nrcs.usda.gov/



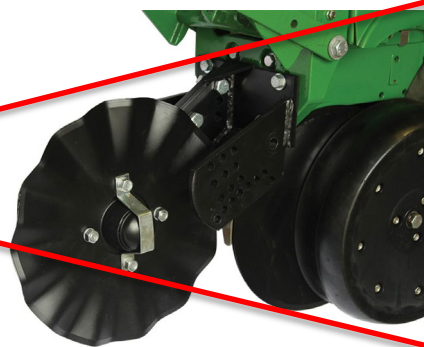
No-till Retrofits



Row Cleaners



~~Coulters~~



Closing Wheels



Natural
Resources
Conservation
Service

nrcs.usda.gov/



No-till Retrofits



Seed Firmers

Fertilizer Systems

Down Pressure Springs

Updated Closing Wheel Tailpiece

...



Natural
Resources
Conservation
Service

nrcs.usda.gov/





No-till Planter Retrofit Program



No-till Planter Retrofit Program



Natural
Resources
Conservation
Service

nrcs.usda.gov/



No-till Techniques



Tillage

- Till to prepare seedbed and terminate cover crop
- Cover crops can increase tillage!
- Kills cover crop early >> reduced growth/reduced benefit

Traditional No-till

- “Spray & Wait” technique
- Kills cover crop early >> reduced growth/reduced benefit

Planting Green

- Plant into “green” living cover crops
- Terminate the cover crop after planting with herbicide
- Maximize growth/maximize benefits



Natural
Resources
Conservation
Service



nrcs.usda.gov/

Growing Degree Days

Year	Jan	Feb	Mar	Apr	May	Jun	Jul	Aug	Sep	Oct	Nov	Dec	Annual
2007	1	0	0	37	254	488	588	583	369	167	0	0	2487
2008	0	0	0	87	179	516	659	531	363	50	32	0	2417
2009	0	0	0	80	216	426	546	637	303	38	3	0	2249
2010	0	0	0	80	344	467	732	615	391	65	0	0	2694
2011	0	0	0	56	325	390	425	566	421	101	15	0	2299
2012	0	0	64	69	346	476	700	683	370	141	4	0	2853
2013	0	0	0	57	324	520	768	596	291	129	11	0	2696
2014	0	0	0	46	240	519	663	516	372	152	6	0	2514
2015	0	0	0	26	398	306	641	667	514	63	30	6	2651
2016	0	0	23	53	317	522	712	711	441	133	6	0	2918
2017	0	0	0	132	236	514	623	569	481	238	15	0	2808
Mean	0	0	8	66	289	468	642	607	392	116	11	1	2599

Cover Crops

Corn Growth Zone
2398 GDD

Cover Crops

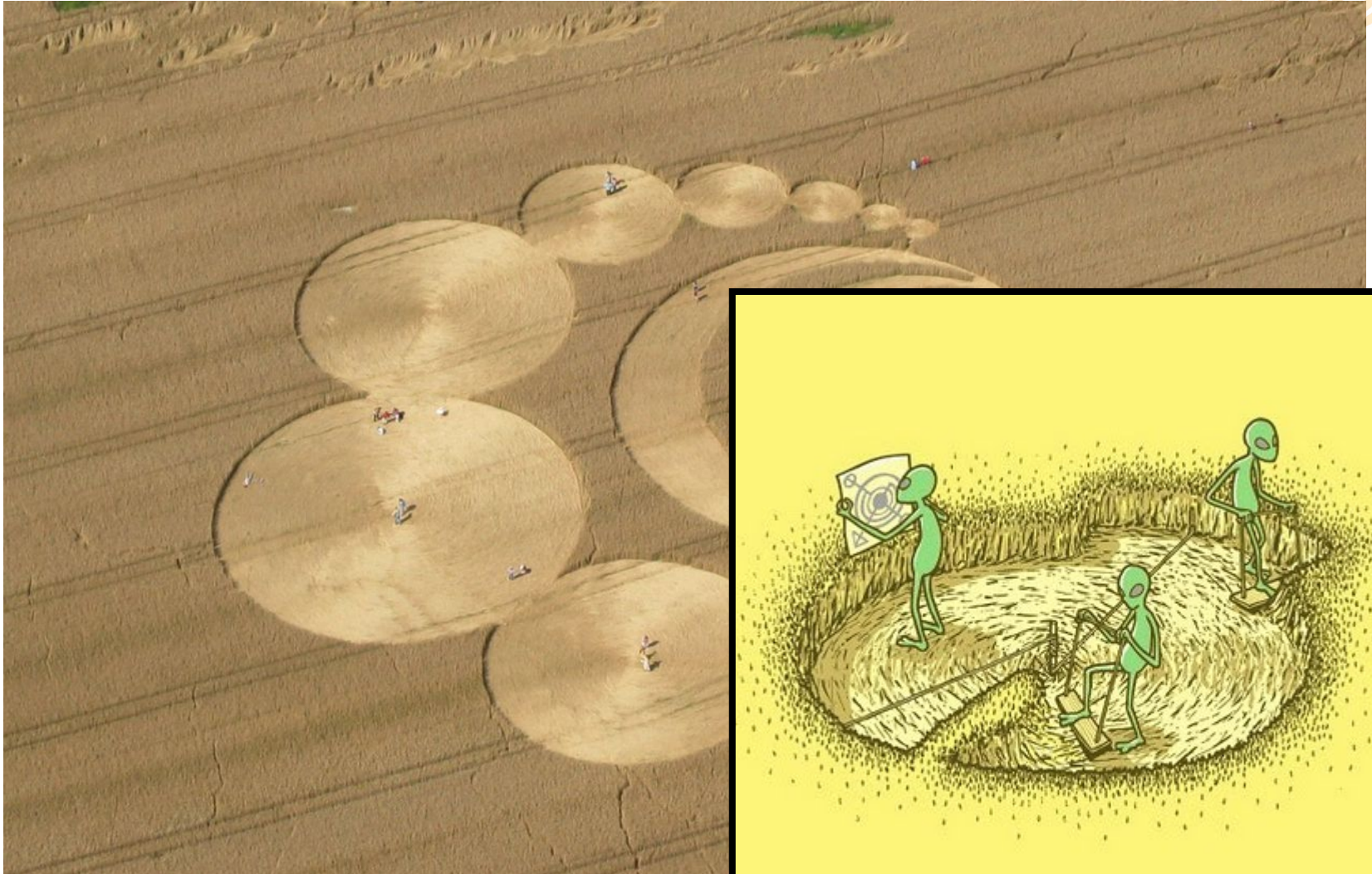


Hanover, NH

Cover Crop Rollers



Cover Crop Rollers



Source: wikipedia.org



Cover Crop Rollers



Timing Key

Too Early = Cover Crops Spring Back, Zombie Covers

Too Late = Cover Crops Seed Back

Cereal Grains

- Fully Headed
- Pollen Shed
- Dry Down

Legumes

- 75% Bloom



Cover Crop Rollers



No-till Planters w/ Rollers



Natural
Resources
Conservation
Service

nrcs.usda.gov/

No-till Planters w/ Rollers



Natural
Resources
Conservation
Service

nrcs.usda.gov/



No-till Planters w/ Rollers



Natural
Resources
Conservation
Service

Fall 2019

nrcs.usda.gov/



No-till Planters w/ Rollers



Natural
Resources
Conservation
Service

nrcs.usda.gov/





Natural
Resources
Conservation
Service

nrcs.usda.gov/



No-till Planters w/ Rollers



Natural
Resources
Conservation
Service

nrcs.usda.gov/



No-till Planters w/ Rollers



No-till Planters w/ Rollers



No-till Planters w/ Rollers



No-till Planters w/ Rollers



Natural
Resources
Conservation
Service

nrcs.usda.gov/



No-till Planters w/ Rollers



Natural
Resources
Conservation
Service

nrcs.usda.gov/



No-till Sweet Corn



No-till Pumpkins & Squash



Pumpkins & Squash

- Fewer herbicide options than sweet corn
- Hard to grow enough cover crop for full weed control
- May need to spray between rows with shields
- Beautiful, clean fruit on a bed of mulch

Natural
Resources
Conservation
Service

nrcs.usda.gov/



No-till Pumpkins & Squash



Pumpkins & Squash

- Fewer herbicide options than sweet corn
- Hard to grow enough cover crop for full weed control
- May need to spray between rows with shields
- Beautiful, clean fruit on a bed of mulch

Natural
Resources
Conservation
Service

nrcs.usda.gov/



No-till Pumpkins & Squash



Pumpkins & Squash

- Fewer herbicide options than sweet corn
- Hard to grow enough cover crop for full weed control
- May need to spray between rows with shields
- Beautiful, clean fruit on a bed of mulch

Natural
Resources
Conservation
Service

nrcs.usda.gov/



No-till Pumpkins & Squash



Pumpkins & Squash

- Fewer herbicide options than sweet corn
- Hard to grow enough cover crop for full weed control
- May need to spray between rows with shields
- Beautiful, clean fruit on a bed of mulch

Natural
Resources
Conservation
Service

nrcs.usda.gov/



No-till Pumpkins & Squash



Pumpkins & Squash

- Fewer herbicide options than sweet corn
- Hard to grow enough cover crop for full weed control
- May need to spray between rows with shields
- Beautiful, clean fruit on a bed of mulch

Natural
Resources
Conservation
Service

nrcs.usda.gov/



No-till Pumpkins & Squash



Pumpkins & Squash

- Fewer herbicide options than sweet corn
- Hard to grow enough cover crop for full weed control
- May need to spray between rows with shields
- Beautiful, clean fruit on a bed of mulch

Natural
Resources
Conservation
Service

nrcs.usda.gov/



No-till Pumpkins & Squash



Weed Suppression

- Cover crop mulch mat suppresses weed growth
- Must have adequate biomass (3 T/ac)
- Adding a legume will reduce N depression

Natural
Resources
Conservation
Service

nrcs.usda.gov/





Non-Discrimination Statement

Non-Discrimination Policy

The U.S. Department of Agriculture (USDA) prohibits discrimination against its customers, employees and applicants for employment on the bases of race, color, national origin, age, disability, sex, gender identity, religion, reprisal, and where applicable, political beliefs, marital status, familial or parental status, sexual orientation, or all or part of an individual's income is derived from any public assistance program, or protected genetic information in employment or in any program or activity conducted or funded by the Department. (Not all prohibited bases apply to all programs and/or employment activities.)

To File an Employment Complaint

If you wish to file an employment complaint, you must contact your agency's EEO Counselor within 45 days of the date of the alleged discriminatory act, event, or in the case of a personnel action. Additional information can be found online at http://www.ascr.usda.gov/complaint_filing_file.html

To File a Program Complaint

If you wish to file a Civil Rights program complaint of discrimination, complete the USDA Program Discrimination Complaint Form, found online at http://www.ascr.usda.gov/complaint_filing_cust.html, or at any USDA office, or call (866) 632-9992 to request the form. You may also write a letter containing all of the information requested in the form. Send your completed complaint form or letter to us by mail at U.S. Department of Agriculture, Director, Office of Adjudication, 1400 Independence Avenue, S.W., Washington, D.C. 20250-9419, by fax at (202) 690-7442, or email at program.intake@usda.gov

Persons with Disabilities

Individuals who are deaf, hard of hearing or have speech disabilities and you wish to file either an EEO or program complaint please contact USDA through the Federal Relay Service at (800) 877-8339 or (800) 845-6136 (in Spanish).

Persons with disabilities, who wish to file a program complaint, please see information above on how to contact us by mail or by email. If you require alternative means of communication for program information (e.g., Braille, large print, audiotope, etc.), please contact USDA's TARGET Center at (202) 720-2600 (voice and TDD).

Supplemental Nutrition Assistance Program

For any other information dealing with Supplemental Nutrition Assistance Program (SNAP) issues, persons should either contact the USDA SNAP Hotline Number at (800) 221-5689, which is also in Spanish, or call the State Information/Hotline Numbers.

All Other Inquires

For any other information not pertaining to civil rights, please refer to the listing of the USDA Agencies and Offices.

This information is provided as a public service and constitutes no endorsement by the United States Department of Agriculture or the Natural Resources Conservation Service of any service, supply, or equipment listed.

While an effort has been made to provide a complete and accurate listing of services, supplies, and equipment, omissions or other errors may occur and, therefore, other available sources of information should be consulted.

