

# New Cultivation Tools for Mechanical Weed Control in Vegetables

**Jed Colquhoun and Robin Bellinder**

Department of Fruit and Vegetable Science,  
 College of Agriculture and Life Sciences, Cornell University

The recent trend toward restricting herbicide use has produced interest in alternative and integrated weed control strategies that include cultivation. As a result, newly developed implements are now available to vegetable growers, but the potential uses of these tools for numerous vegetable crops can be confusing. This publication describes some of these tools and their advantages and disadvantages, based on four years of research at Cornell University. It should be noted, however, that this is not a complete list; several other designs are available that were not tested in these trials.

## Flex-tine harrows

Flex-tine harrows are used broadcast, both over and between the crop rows. They are most efficient when weeds are in the white-thread or cotyledon development stage. In direct-seeded crops, such as snap beans or sweet corn, flex-tine implements are used preemergence. Tines pass above the planted seed. Harrowing can be repeated postemergence for control of newly germinated weeds, but only when the crop is well-rooted. Cultivation intensity can be modified to minimize crop damage. Guide wheels and tine intensity regulate harrowing depth.

## Advantages

- Tools are available in large widths (up to 40') and are operated at high speeds when used preemergence.
- Flex-tine implements are useful for a number of crops and row spacings with little or no equipment modifications.
- Tines that pass over the crop row can be lifted, allowing for aggressive between-row harrowing when the crop is sensitive to cultivation damage.
- Preemergence harrowing breaks crusted soils and may increase crop emergence rates.

## Disadvantages

- Cultivation timing is critical; weeds with four or more leaves and emerged grasses at any stage are rarely controlled. Therefore, early-season flex-tine harrowing should be integrated with a more aggressive cultivator or with postemergence herbicides for control of escaped or newly germinated weeds.
- Research in transplanted broccoli, snap beans, and sweet corn has shown that flex-tine harrows can reduce crop stand and yield when used before the crop is well-rooted.

## Implement Descriptions

### Einbock flex-tine harrow

The Einbock harrow (Fig. 1) has floating beds of tines mounted on a tool bar. Cultivation on uneven ground or hillsides is possible with the floating bed system. Tines can be lifted above the crop row; however, tine intensity is modified on a bed-by-bed basis with a single adjustment.

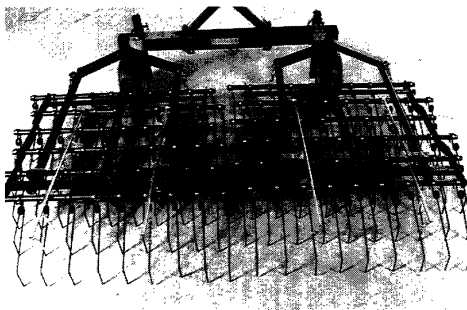


Fig. 1

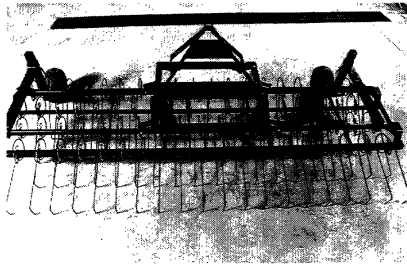


Fig.2

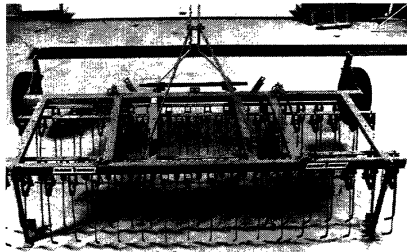


Fig.3

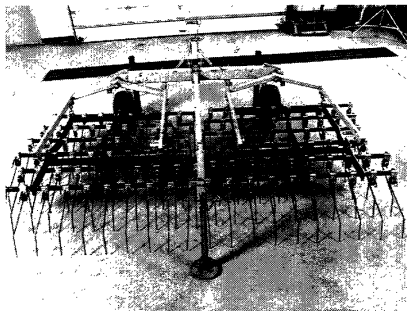


Fig.4

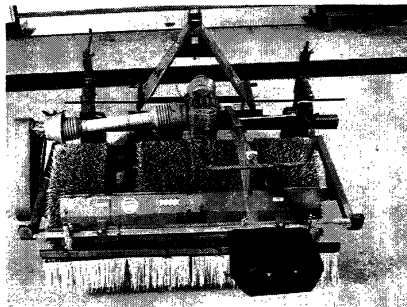


Fig.5

#### **Lely flex-tine harrow**

The Lely harrow (Fig. 2) is a lightweight tool with very flexible tines that vibrate to rip weeds from the soil. The implement's light weight can be a "cure or curse"—the harrow is easily maneuvered with a low-horsepower tractor, but its cultivation efficiency is reduced on hard-packed or crusted soils. Tine intensity is modified on a tine-by-tine basis.

#### **Rabe Werk flex-tine harrows**

Rabe Werk manufactures two harrows: one having flat tines (Fig. 3) and one with round tines (Fig. 4). The flat-tined harrow is very aggressive and effectively breaks crusted soils. Tines are modified individually in three intensities: high, low, and tines lifted above the crop rows. The round-tined implement is similar to the Einbock harrow and has floating beds of tines.

#### **The Baertschi brush hoe**

The brush hoe has PTO-driven plastic bristles that rotate on a horizontal plane, aggressively ripping weeds from the soil (Fig. 5). Shields, hung above the soil surface, protect the crop from the rotating brushes but allow soil to move into the crop row. Because the tool is very aggressive and precise, an additional operator (on the rear seat) is required to steer the shields over the crop row. Cultivation depth is modified with guide wheels and the three-point hitch attachment. Several row spacings and brush configurations are available.

#### **Advantages**

- The aggressive nature of the brush hoe increases the length of time available for effective cultivation; weeds up to ten inches tall can be controlled.
- The implement is effective on slightly moist soils.
- Soil passing under the shields smothers weeds in the crop row.
- The dust layer that results from brushing delays new weed germinations. For example, in transplanted broccoli, a single pass of the brush hoe provided season-long weed control comparable to standard herbicides without reducing yields.

#### **Disadvantages**

- The brush hoe requires two operators.
- Wind erosion is possible with aggressive brushing on dry soils.
- Row spacing modifications are expensive and time consuming; therefore, all cultivated crops must have the same spacing.
- The initial implement purchase is costly.

### **The Budding finger weeder**

The finger weeder is designed specifically for in-row weed control (Fig. 6). The tool has three pairs of ground-driven rotating fingers: two pairs in the front push soil and uprooted weeds away from the crop row; while the third pair pushes soil back into the row, covering weeds that were missed by the other fingers. The weeder is most effective when fingers pass very close to the crop row; therefore, precise cultivation and slow driving speeds are important. The finger weeder is most effective on small-acreage, high-value crops.

#### **Advantages**

- The weeder offers excellent in-row weed control.
- The finger weeder is a lightweight tool and can be mid-mounted on a small tractor.

#### **Disadvantages**

- The weeder must be used when weeds are small; therefore, timing is critical.
- Between-row control is poor. Finger weeders should be used in combination with an inter-row cultivator.
- Slow, precise cultivation is necessary to minimize crop damage.

### **Bezzeries torsion weeder**

The torsion weeder is mounted on an existing inter-row cultivator for improved in-row weed control (Fig. 7). This simple tool has spring-loaded steel rods on each side of the crop row that undercut small weeds. The width of the uncultivated strip is easily adjusted for each crop and development stage.

#### **Advantages**

- The torsion weeder offers excellent in-row weed control.
- The simple design minimizes potential cultivator repairs.
- The torsion weeder is an economical addition to an existing cultivator.

#### **Disadvantages**

- Careful, accurate cultivation is important.

### **Integrated Management Strategies**

The best weed control strategy often integrates several management strategies, which may include mechanical control. Two ways to reduce herbicide use while minimizing the risk of poor weed control and reduced yields are to combine cultivation with banded herbicides or with some of the new postemergence herbicides (e.g., Reflex and Basagran for snap beans), used on an as-needed basis. Research in sweet corn, for example, has shown that yields were equivalent when a

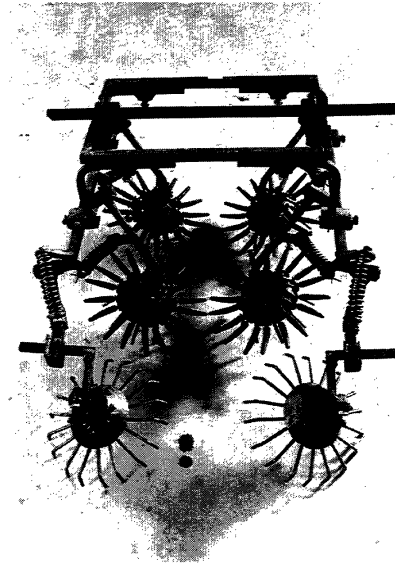


Fig.6

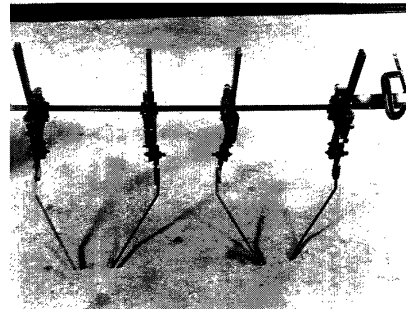


Fig.7

single cultivation was combined with Dual and Atrazine banded over the crop row and when the same herbicides were applied broadcast without cultivation, even in wet years. Results were similar in potato studies, where the combination of banded herbicides and a single hilling six weeks after planting produced yields equivalent to broadcast herbicides plus hilling.

---

## Manufacturers

### **Brush hoe**

Baertschi FOBRO  
1715 Airpark  
Grand Haven, MI 49417  
Phone: 616-847-0300  
Fax: 616-842-1768

### **Finger weeder**

Budding Weeder Co.  
7015 Hammond Ave.  
Dutton, MI 49316  
Phone: 616-698-8613

### **Torsion weeder**

Bezzeries Brothers, Inc.  
P.O. Box 211  
Orosi, CA 93647  
Phone: 209-528-3011

### **Flex-tine harrows**

**Einbock:**  
Landaschinenbau GES. m.b.h.  
& Co. KG  
A-4751 Dorf an der Pram  
Austria  
Phone: 43-7764-6466  
Fax: 43-7764-65-3585

### **Canadian Distributor:**

HWE-Agricultural Tech. Ltd.  
Mr. Hans Evermann  
B. P. 1515 Cdn.  
Embrun, Ont. K0A 1W0  
Phone/Fax: 613-443-3386

### **Rabe Werk:**

Machinerie Agricole St. Cesaire  
Inc.  
C.P. 399, 650 Route 112  
St. Cesaire, Qc J0L 1T0  
Canada  
Phone: 514-469-4081  
Fax: 514-469-3659

### **Lely:**

Lely Corporation  
Box 1060, US 301 South  
Wilson, NC 27894  
Phone: 919-291-7050  
Fax: 919-291-6183



## Cornell Cooperative Extension

*Helping You Put Knowledge to Work*

© 1997 by Cornell University

This publication is issued to further Cooperative Extension work mandated by acts of Congress of May 8 and June 30, 1914. It was produced with the cooperation of the U.S. Department of Agriculture; Cornell Cooperative Extension; and College of Agriculture and Life Sciences, College of Human Ecology, and College of Veterinary Medicine at Cornell University. Cornell Cooperative Extension provides equal program and employment opportunities. William B. Lacy, Director.

Alternative formats of this publication are available on request to persons with disabilities who cannot use the printed format. For information, call or write the Office of the Director, Cornell Cooperative Extension, 276 Roberts Hall, Ithaca, NY 14853 (607-255-2237).

Produced by Media Services at Cornell University

Printed on recycled paper

102FSNCT 75/150 3/97 1M MS60387

Additional copies of this publication may be purchased through Cornell University, Media Services Resource Center, 7 Cornell Business & Technology Park, Ithaca, NY 14850.

Phone: 607-255-2080

Fax: 607-255-9946

E-mail: <Dist\_Center@cce.cornell.edu>

A free catalog of Cornell Cooperative Extension publications and audiovisuals is available from the same address, or from any Cornell Cooperative Extension county office. The catalog also can be accessed at the following World Wide Web site:

<http://www.cce.cornell.edu/publications/catalog.html>