

Art of Horticulture

2012 Final Projects

Lighting Up The World







Seasonal Baubles

Photo Collage



Botanical Illustration



Pitcher plant



Orchid

Cedar Coasters



Found and cut
cedar branch

Ground almond,
macadamia, and
peanut nuts

Collect oil from
the butters,
sanded wood

Applied oil
additional
sanding



Cedar Coasters

CUT



SANDED



DANISH OIL



POLYURETHANE

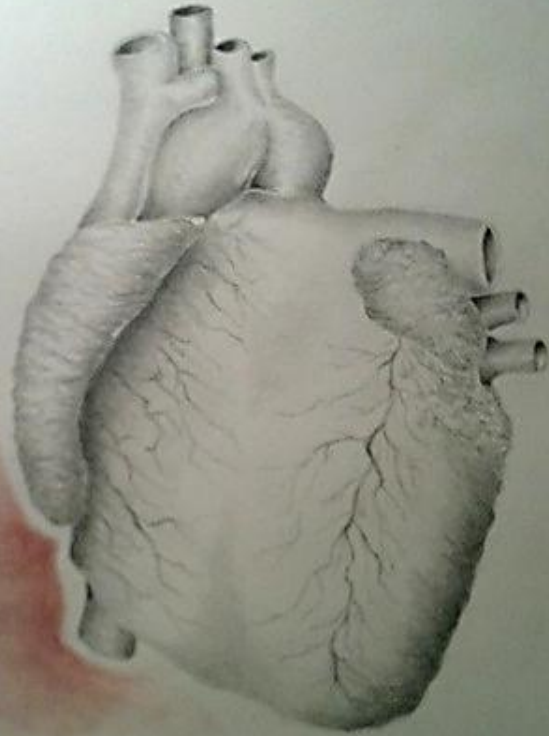


WAX OVER
DANISH OIL



MACADAMIA
NUT OIL



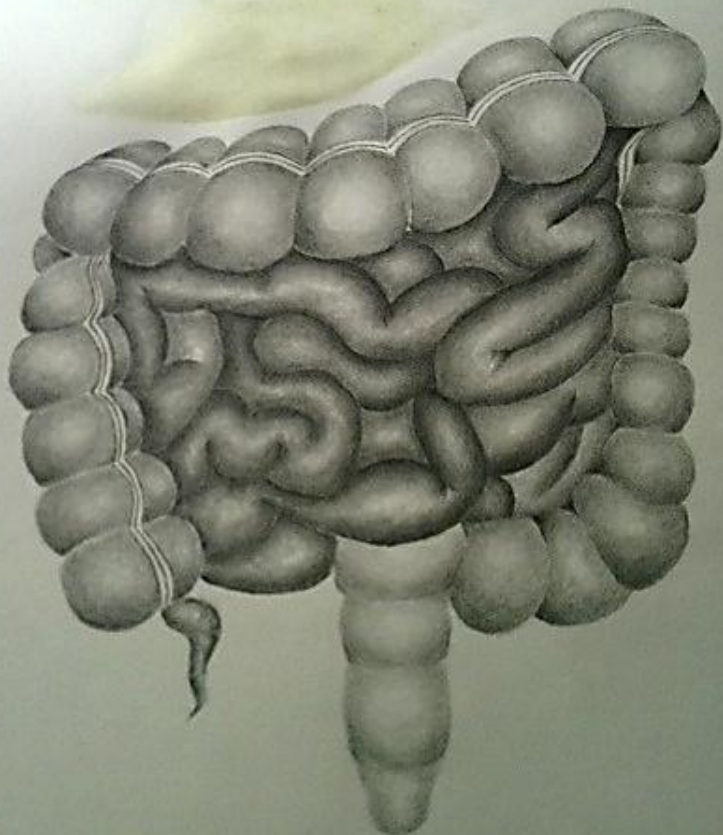


Heart with a stain of beet juice

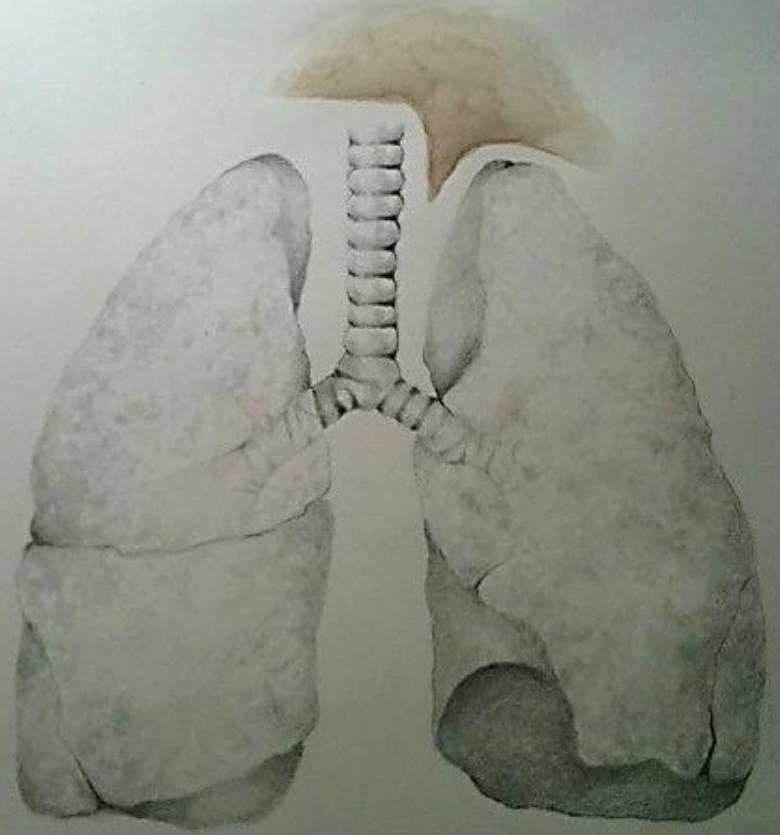
Organic Anatomy



Brain with a solution of water and turmeric



Intestines with the juice of heated and
mashed spinach



Lungs with a heated solution of water and
cacao

Organic Anatomy

A Flower's Decay



***Brass Tesseraet
with Trained Pea
Plant***



Photographs and poetry

The smell of autumn fragrancd the
air.

Yet the biting wind was at times hard
to bear.

It pierced my skin like knives and
broken glass,

But her beauty was enchanting and
impossible to surpass.

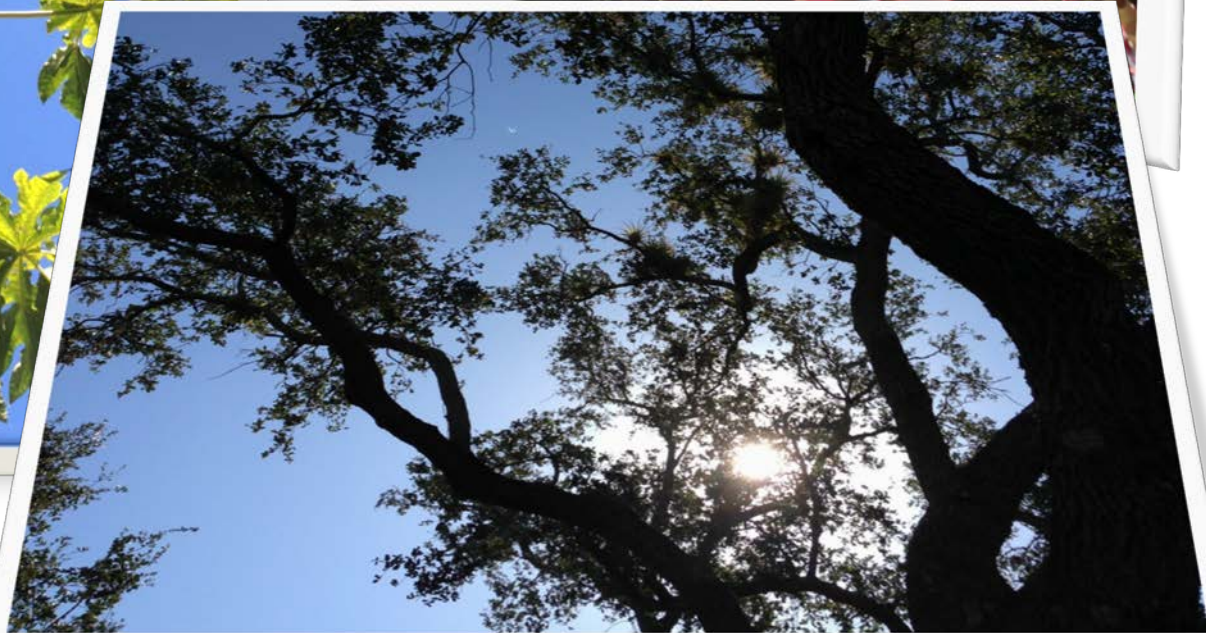
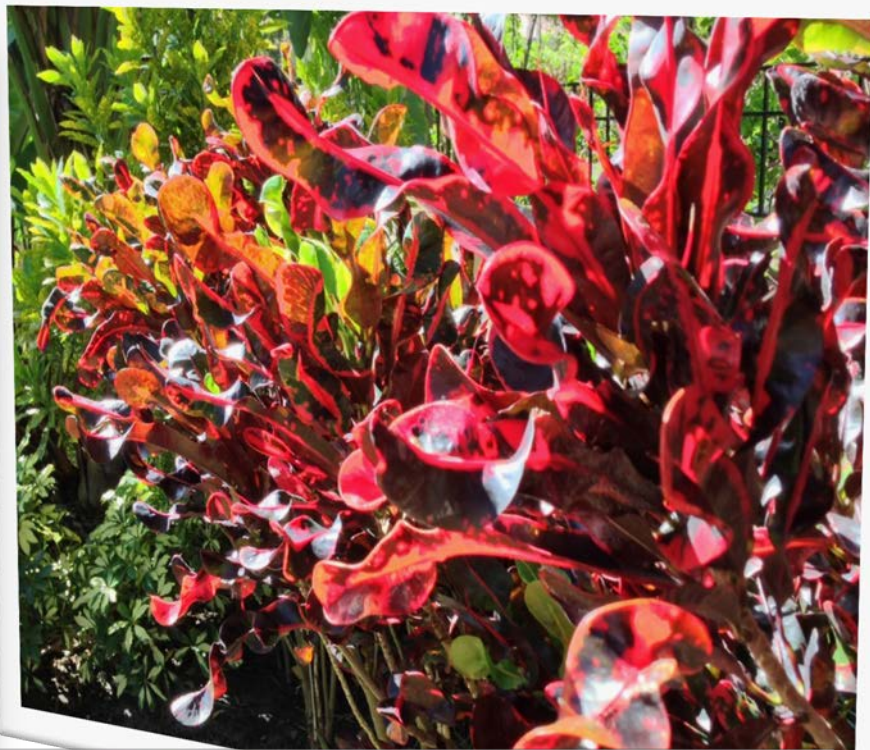
I stood in amazement and I watched
her leaves glide towards the ground,

It was hard to watch but most
impossible to turn around.

I smiled and thought how lucky I'd
been,

And looked to the horizon and
waited for spring to begin.





The Art of Horticulture Creative Project

For my creative project I designed and created seasonal window displays. Shadow boxes (8" x 10" x 1-1/2") confine and create a window-like structure while the vignette's scenery is comprised of magazine cut outs, paper, sticks, flowers, feathers, beads, pine needles, leaves, dried berries and oatmeal. These seasonal window displays are to be imaginative and memorable to entice and enhance the shoppers experience.

Fall 2012



This fall vignette depicts a lake in the woods. Real branches, leaves and feathers were used.

Winter 2012



The winter scene is comprised pine tree needles as well as small twigs assembled to make smaller trees.

Spring 2013



This spring display displays a ballerina emerging from a flourishing spring flower comprised of purple gerber daisies.

Summer 2013



This summer scene is composed of many natural elements, such as, oatmeal berry branches and dried babies breath.



Love

Sadness

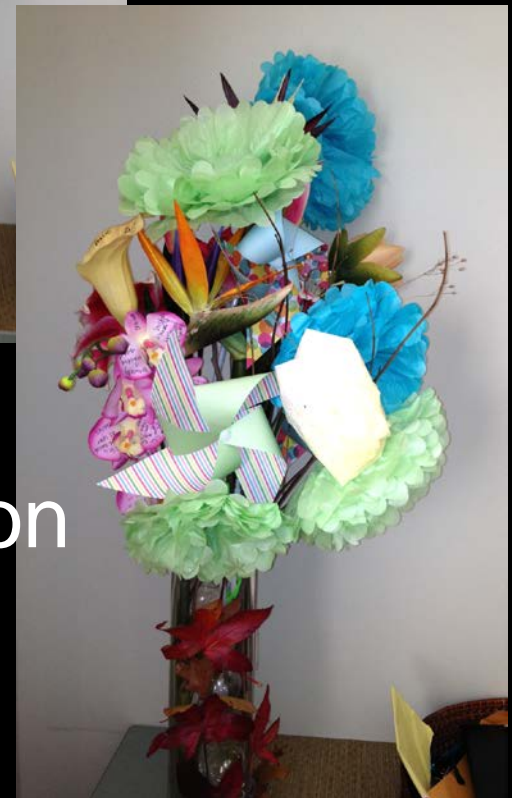


Emotiplants



Inspiration

Happiness



A wolf made from
raffia, preserved
leaves, branches and
rocks



Transplanted



Famous Art Recreations

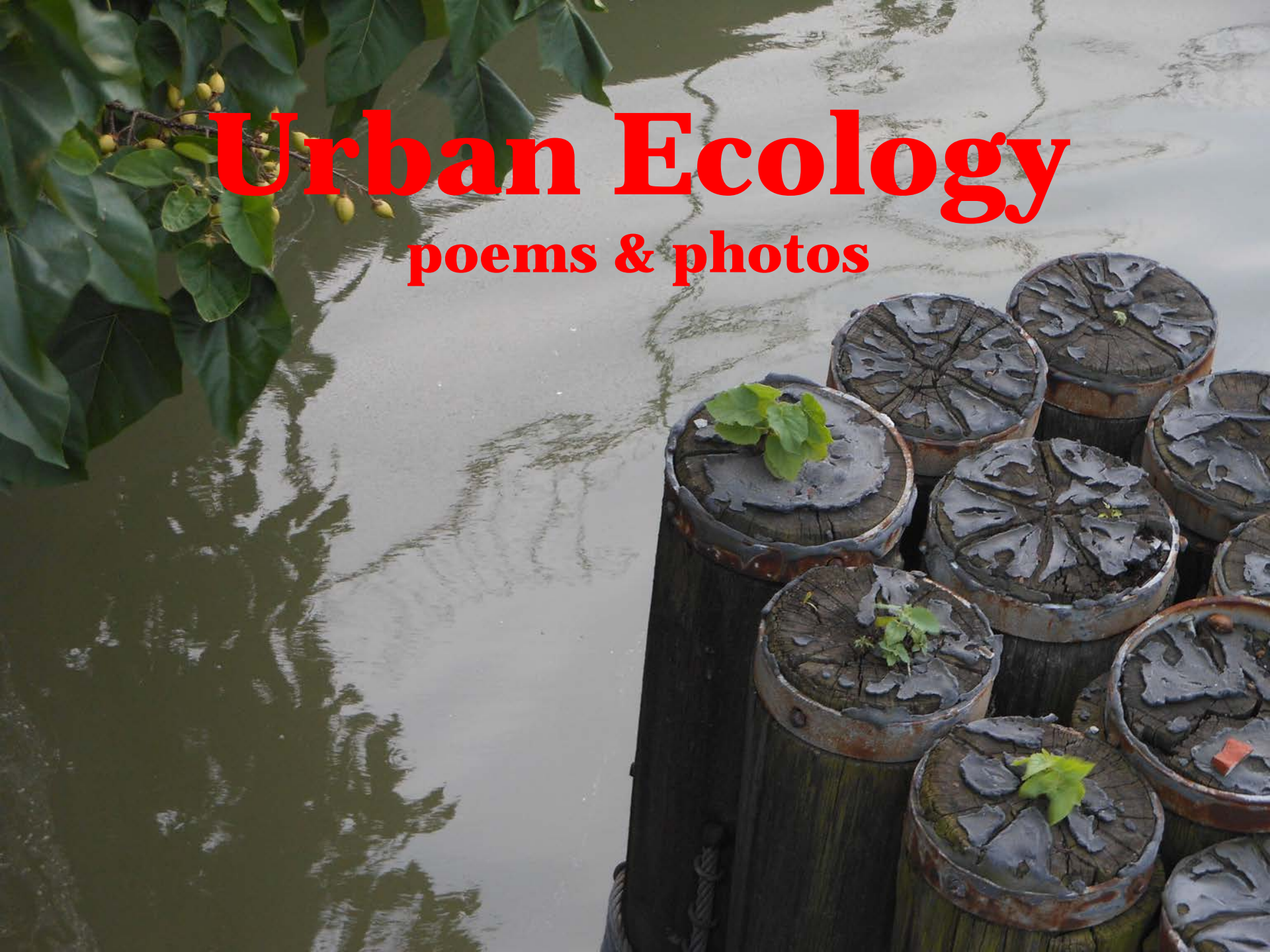


Daisy Inspired Jewelry



Urban Ecology

poems & photos



Autumn Aubade

Behind the opaque dawn of stained glass light
we might not see red leaves slip off the ledge.
You've come into the place I go to write –
words birthed, beset by autumn world's collapse.

Amid the waiting dying, what are you?
To dare to bud, a flower from the down,
as fragile as the leaf that grasps the dew,
as troubled as the root that cracks the ground.

How strange it seems – this healing in decay!
I wrote *I love a question* on your lips.
You know my hesitation must betray
I doubt to drown your fears before it hits.

A pacifist to start another war,
you glance my hand and stumble out the door.



Rocketeer

“the light that shrivels a mountain / and leaves a man alive” -Adrienne Rich

**The way back north, Orion flipped. They say
the change made you. Stars
buried by light, you cast
into black. Higher now**

**the rocket soars. When you broke the surface,
your hook caught comet, Earth's
itinerant moonchild; when you broke
the surface of night, giving the green**

**light, you took off.
The sky yours, now,
waves scoring every shore.
Rocketeer, when you tore**

**past, did you snag
that star, claim the constellation
you were due? Did you
make your mark on the dark?**

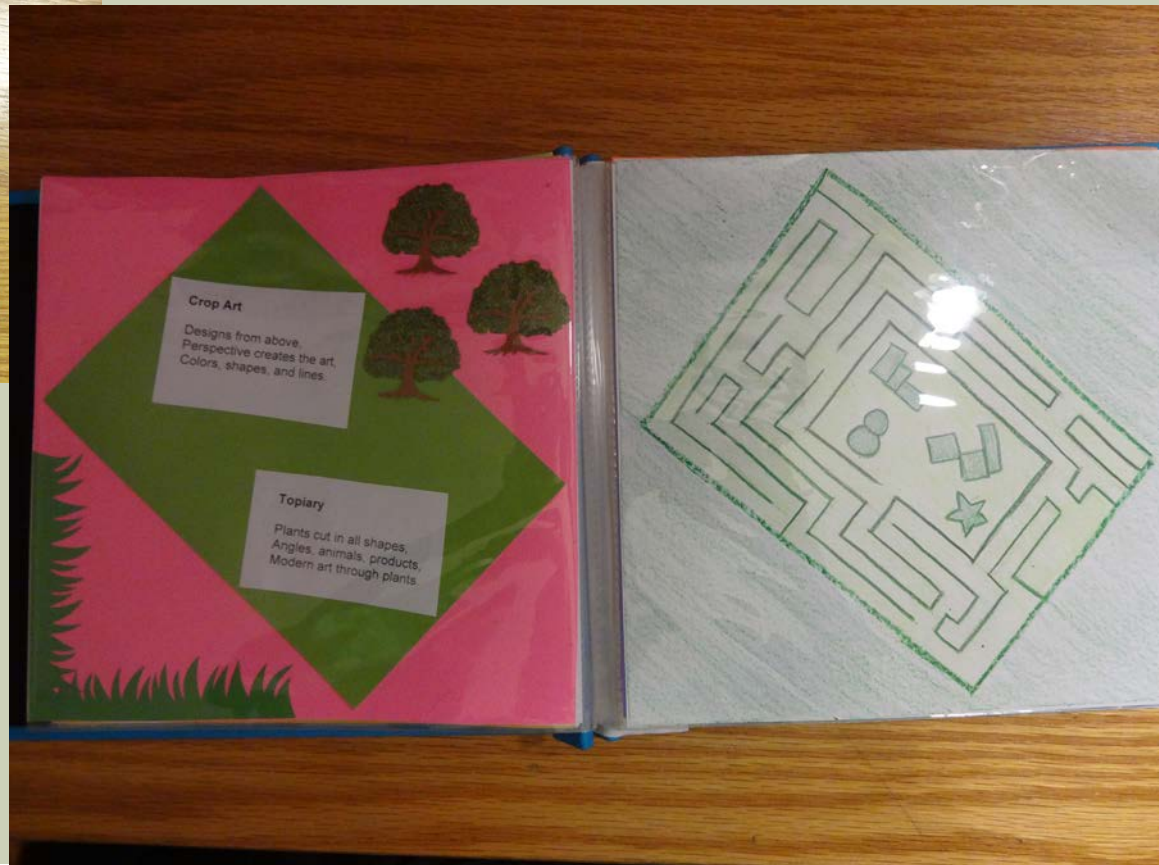
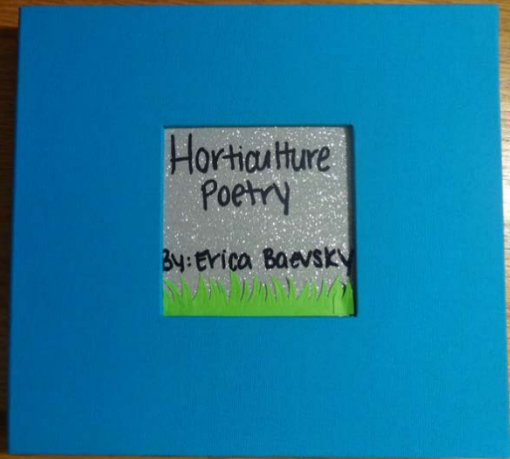
PLANT INSPIRED LAMP SHADES



HORTICULTURE COLLAGE



HORTICULTURE POETRY AND DRAWINGS



UKRAINIAN EGGS



“LIVING TABLE”



HORTICULTURE OFFICE ITEMS AND HORTICULTURE CALENDAR



Aquascape

Hardscape looked most like ideal.

Skeleton for the final product.

Probably the neatest the work ever was.



Evolving Work



Initial planting looked green and healthy.

Micro-sword was buried as soil was displaced by other plants.

The displacement of 'sod' by the taller grasses.

Starting to show signs of getting messy.

'Final' Work



Micro-sword cut to resemble
sod.

Verticality isn't fully realized.

Depth and slope hard to capture
on phone camera.

Technically incomplete, but an
instructive exploration of aqua
-culture and -scape.